



**WE ARE  
MACMILLAN.  
CANCER SUPPORT**



# Tackling inequalities in cancer Inpatient screening

**Julie Tucker - project manager**





**WE ARE  
MACMILLAN.  
CANCER SUPPORT**



# The big issues

Flagging

Consent

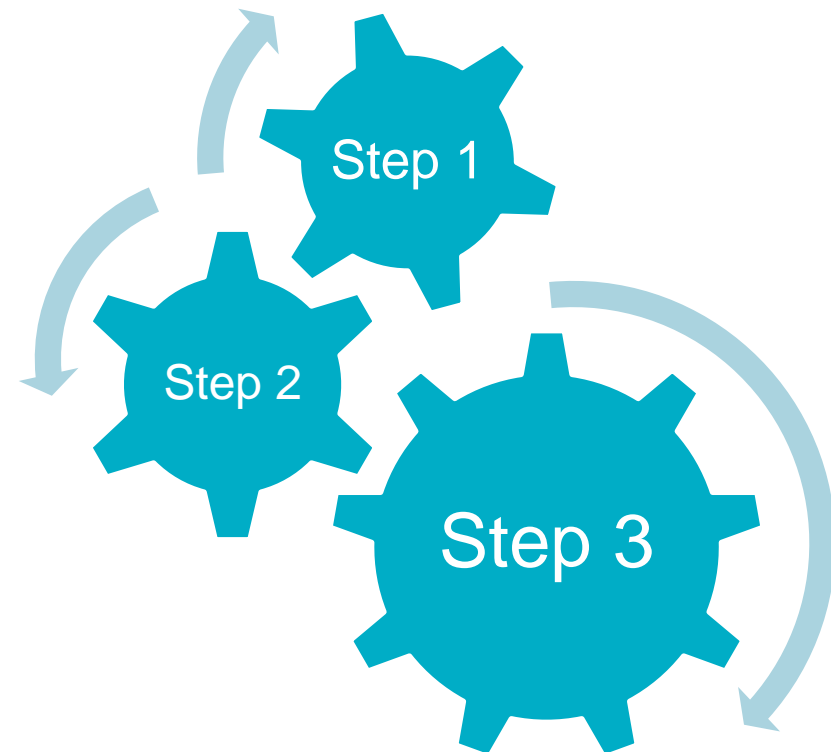
Individuals knowledge

Staffs skill set

Gate keepers



# Cancer screening for people in inpatient settings



# Inpatient screening



## What is the problem?

**“Individuals in inpatient settings not registered with a GP are not invited for screening.”**

# Inpatient screening



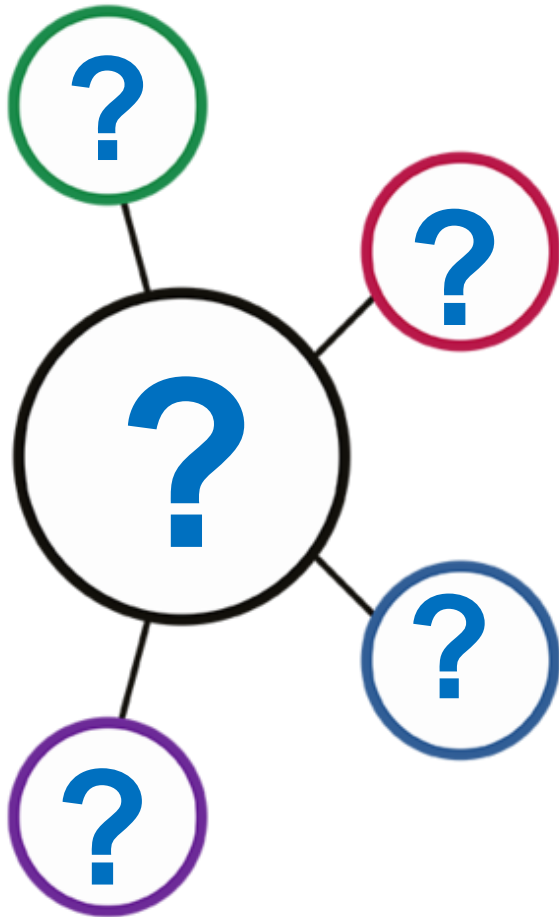
**“Individuals in inpatient settings not registered with a GP are not invited for screening.”**

## **Aim**

Make cancer screening accessible for people in inpatient settings

- Mental health and learning disability
- Initially develop a pathway for bowel screening
- Future work will look at breast and cervical, other work is looking at AAA screening

# How and who



- Large interest meeting
- Development of action plan
- Identified individuals required to make it happen
- Development of pathway
- Testing
- Rollout

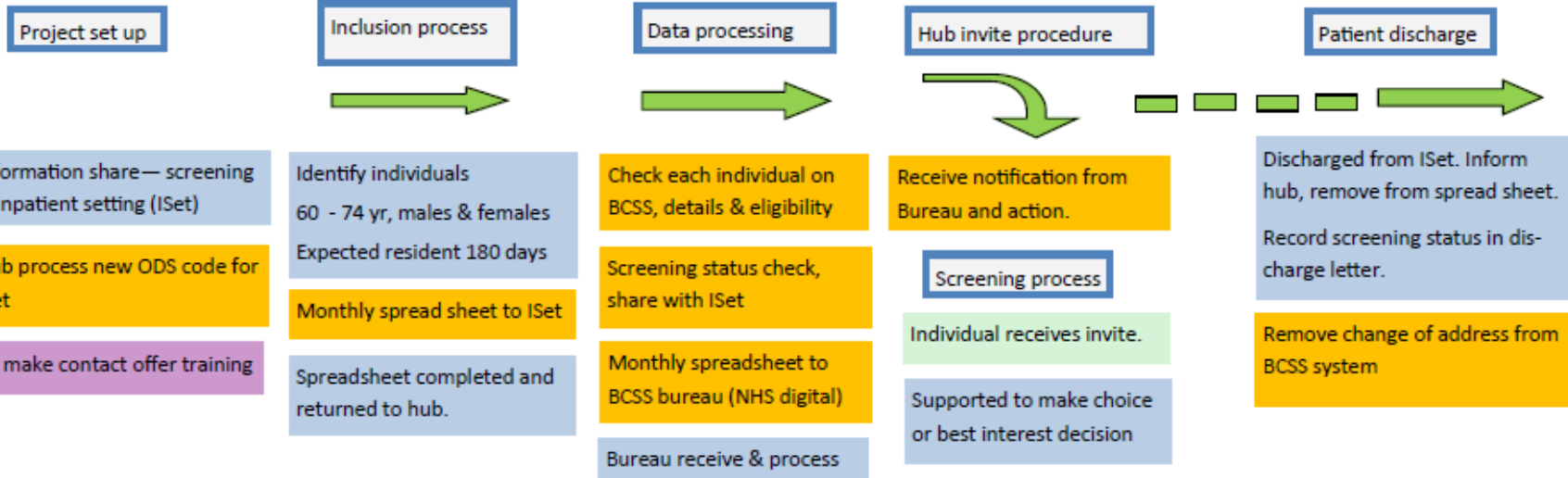
# How and who



- **NHS BCSP hub**
- **PHE National screening programme**
- **NHS Digital**
- **Inpatient settings (NHS FT's and private)**
- **NHS BCSP screening centre**
- **North East and Cumbria Learning Disability Network**



# Inpatient screening pathway



KEY		
Bowel screening centre	<span style="display:inline-block; width:15px; height:15px; background-color:purple; border:1px solid black;"></span>	Hub—Bowel cancer screening programme hub
Inpatient setting (ISet)	<span style="display:inline-block; width:15px; height:15px; background-color:lightblue; border:1px solid black;"></span>	SC—Bowel cancer screening centre
Bowel screening hub	<span style="display:inline-block; width:15px; height:15px; background-color:yellow; border:1px solid black;"></span>	BCSS—Bowel cancer screening computer system
NHS digital (Bureau)	<span style="display:inline-block; width:15px; height:15px; background-color:grey; border:1px solid black;"></span>	FOBT—Faecal occult blood test
Participant / inpatient	<span style="display:inline-block; width:15px; height:15px; background-color:lightgreen; border:1px solid black;"></span>	SSP —Specialist screening practitioner (bowel nurse)

**Screening process, further assessment**

# Inpatient screening pathway



## Project set up

Information sharing between hub, inpatient setting and screening centre

Hub establish ODS code

# Inpatient screening pathway



## Inclusion process

### Inclusion criteria

60 - 74 years

Males and females

Expected to be resident for 180 days

# Inpatient screening pathway



## Monthly information share

Hub send spread sheet monthly inpatient setting.

Spreadsheet completed and returned to hub.

Individuals stay on spreadsheet while resident.

On discharge remove from spread sheet and inform hub by email.

# Inpatient screening pathway



## Data processing

Hub check identified individuals on BCSS

Hub complete screening status check and share with inpatient setting

Hub send monthly spreadsheet to NHS digital for processing

NHS Digital process information and inform Hub

# Inpatient screening pathway



## Hub invite procedure

Hub receive notification from NHS digital and action.

Individual invited to take part in bowel screening.

# Inpatient screening pathway



## Screening process

Individual receives invite.

Supported to make decision on participation or best interest decision made and recorded.

Possible results:

- All clear, invite in 2 years up to age 74
- Referral to screening centre, assessment for further tests

Results received by mail to individual

Copy letter sent to inpatient setting.

# Inpatient screening pathway



## Screening process, further assessment

Hub contact Screening Centre and inpatient setting.

Screening centre (SSP) appointment made including reasonable adjustments as required.

SSP appointment held, fitness for colonoscopy assessed.

Pathway follows standard BCSP pathway with reasonable adjustments as required.



# Inpatient screening



## **Where are we up to...**

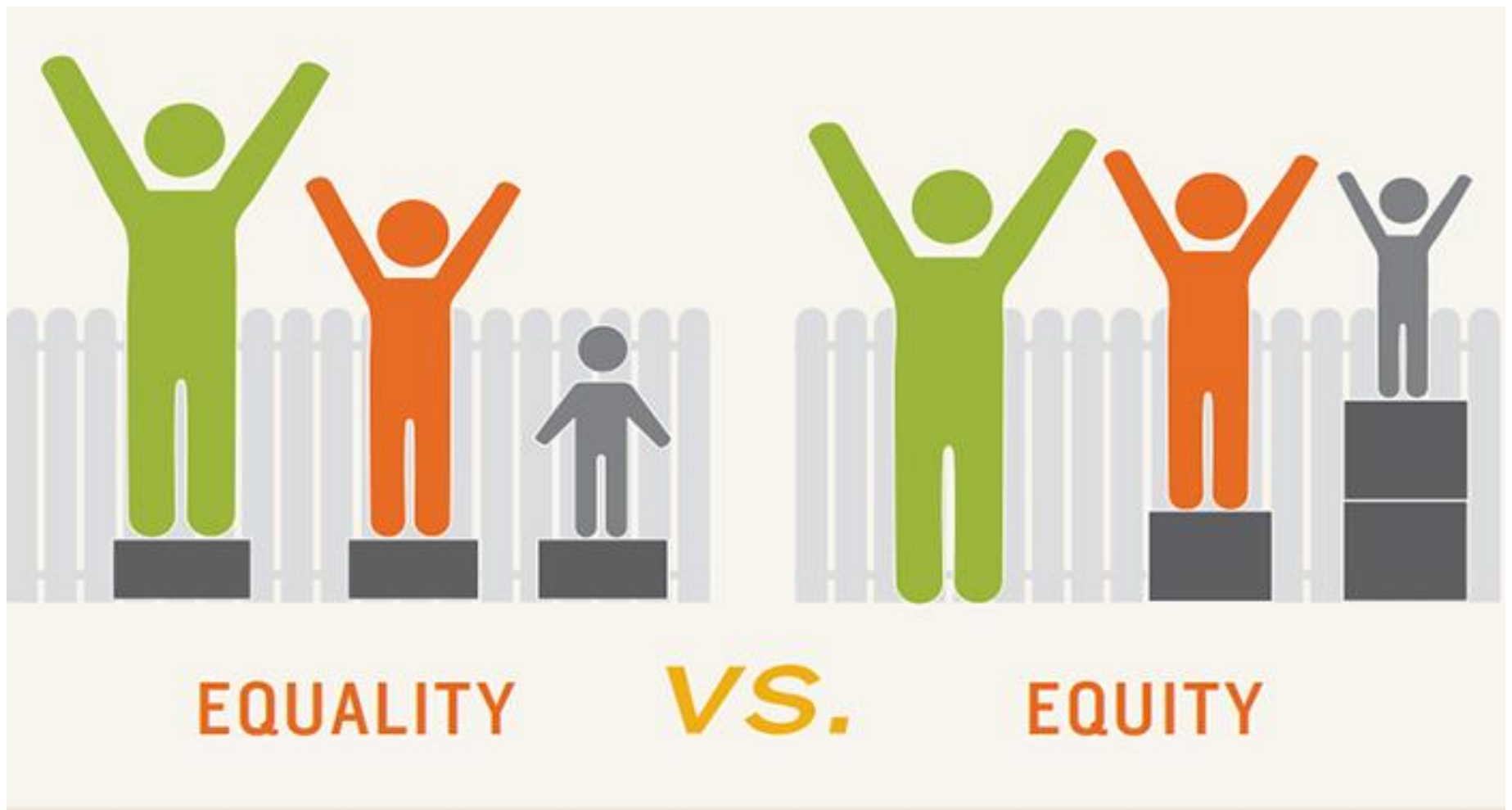
Tested process with Northumberland, Tyne and Wear Mental Health NHS FT

Sign up from NTW to roll out across trust

Tees, Wear and Esk Valley Mental Health Foundation Trust ready to test process

Talking to Rugby BCSP Hub to enable Cumbria FT to start

Need to engage private providers



[Julie.tucker11@nhs.net](mailto:Julie.tucker11@nhs.net)

T: 0113 824 9693

M: 0786 0177 981

