

CONTENTS

SECTION 1 NEHODS- Northern England Haemato- Diagnostic Service

SECTION 2 Guidelines for Cytogenetic analysis in Haematological Malignancies

SECTION 3 North of England Cancer Network Guidelines and Indications for PETCT

SECTION 4 Guidelines for management of Acute Myeloid Leukaemia (AML)

SECTION 5 Guidelines for Management of Myelodysplastic Syndromes

SECTION 6 Guidelines for Management of Acute Lymphoblastic Leukaemia

SECTION 7 Guidelines for the Management of Chronic Myeloid Leukaemia

SECTION 8

Guidelines for Management of Myeloproliferative Disorders

Polycythaemia Vera (PRV)

Myelofibrosis (MF)

SECTION 9

Guidelines for Management of Chronic Lymphocytic Leukaemia (CLL) and Lymphoproliferative Disorders

Hairy Cell Leukaemia

T-Prolymphocytic Leukaemia

Waldenstrom Macroglobulinaemia

SECTION 10

Guidelines for the Management of Low-grade Non-Hodgkin Lymphoma

Mantle Cell Lymphoma

SECTION 11 Guidelines for the Management of High Grade B Cell Non-Hodgkin Lymphoma (NHL)

SECTION 12 Guidelines for the Management of Classical Hodgkin Lymphoma

SECTION 13 Guidelines for the Management of Mature T-Cell and NK-Cell Neoplasms

SECTION 14 Guidelines for Management of Plasma Cell Myeloma

SECTION 15 Indications for Haemopoietic Stem Cell Transplantation

SECTION 16 Clinical Guideline for the prophylaxis and treatment of tumour lysis syndrome in patients receiving treatment for haematological malignancies

SECTION 17 Blood Transfusion Guidelines

SECTION Appendix

Appendix 1 – Teenage and Young Adult Pathway for initial Management

Appendix 2 – Pathway for follow up on completion of First line treatment

Appendix 3- TYA Designated Hospitals

Appendix 4 – NHS Specialised Services Pathway

Appendix 5 – Local Referral Pathways and Levels of Care

Appendix 6 - Pathways

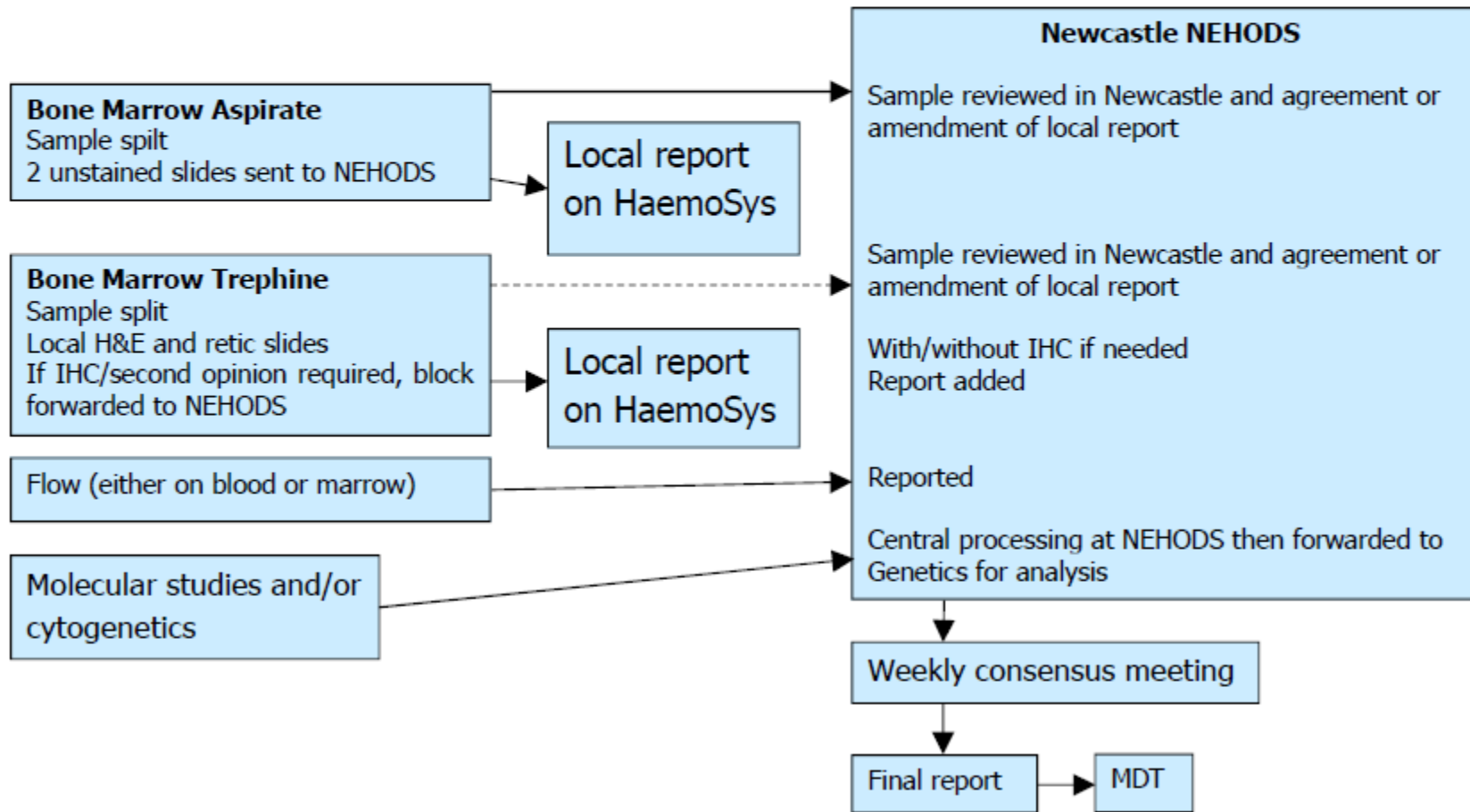
Appendix 7 – Inter-provider transfers

- Multiple Myeloma
- Non-Hodgkin Lymphoma
- Hodgkin Lymphom

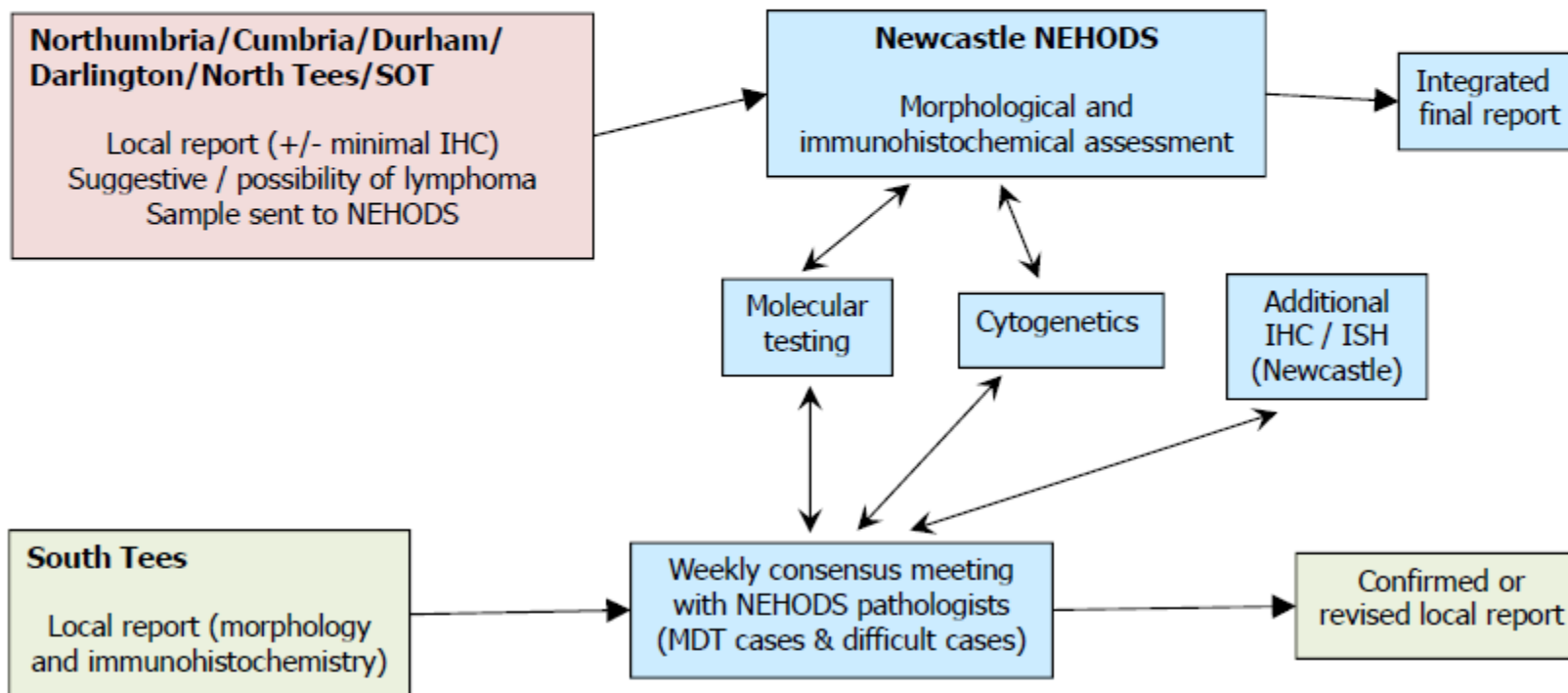
NEHODS- Northern England Haemato- Diagnostic Service

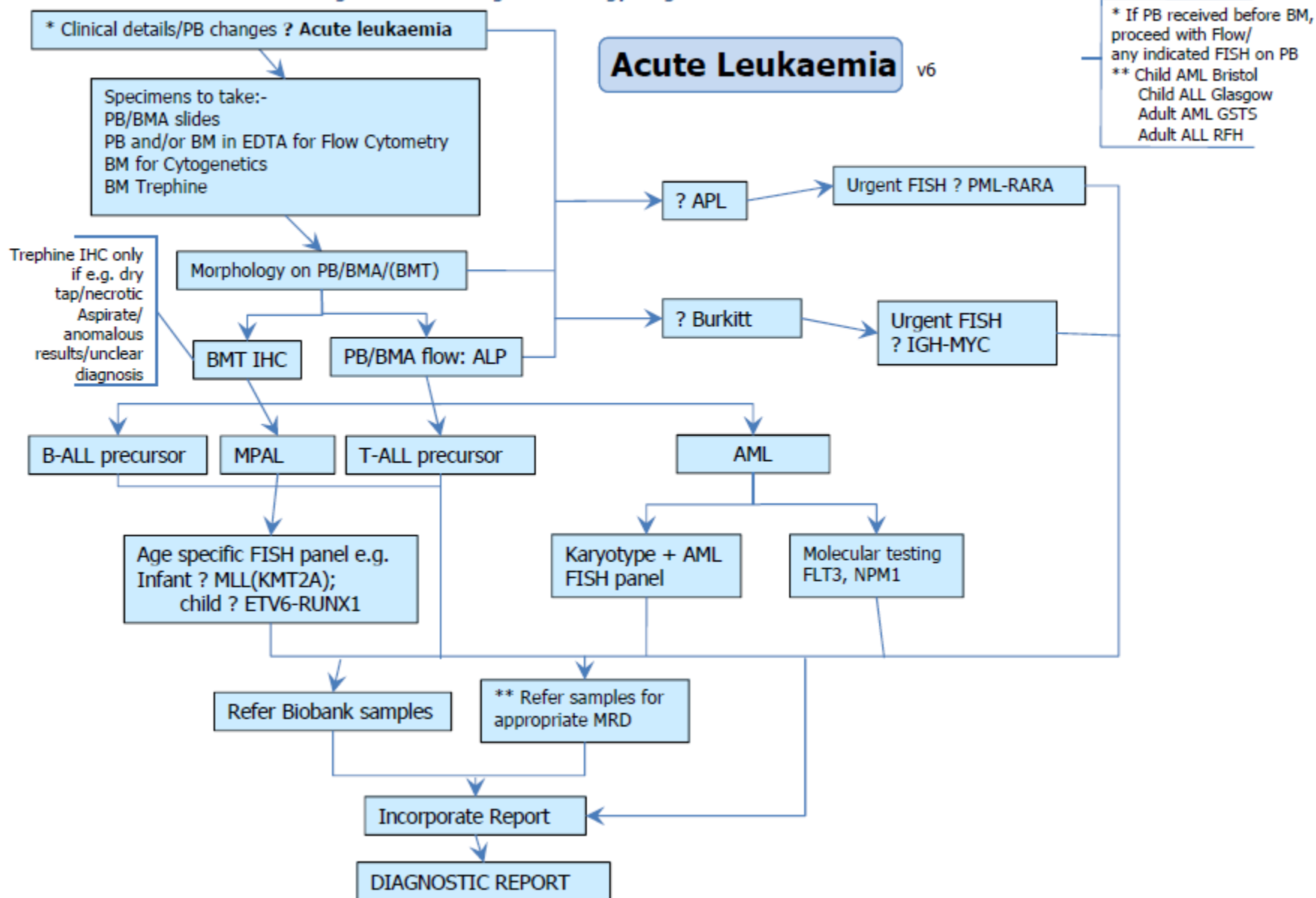
Bone Marrow Biopsies v3

Northumbria/Cumbria/Durham/Darlington/South Tees/North Tees/SOT

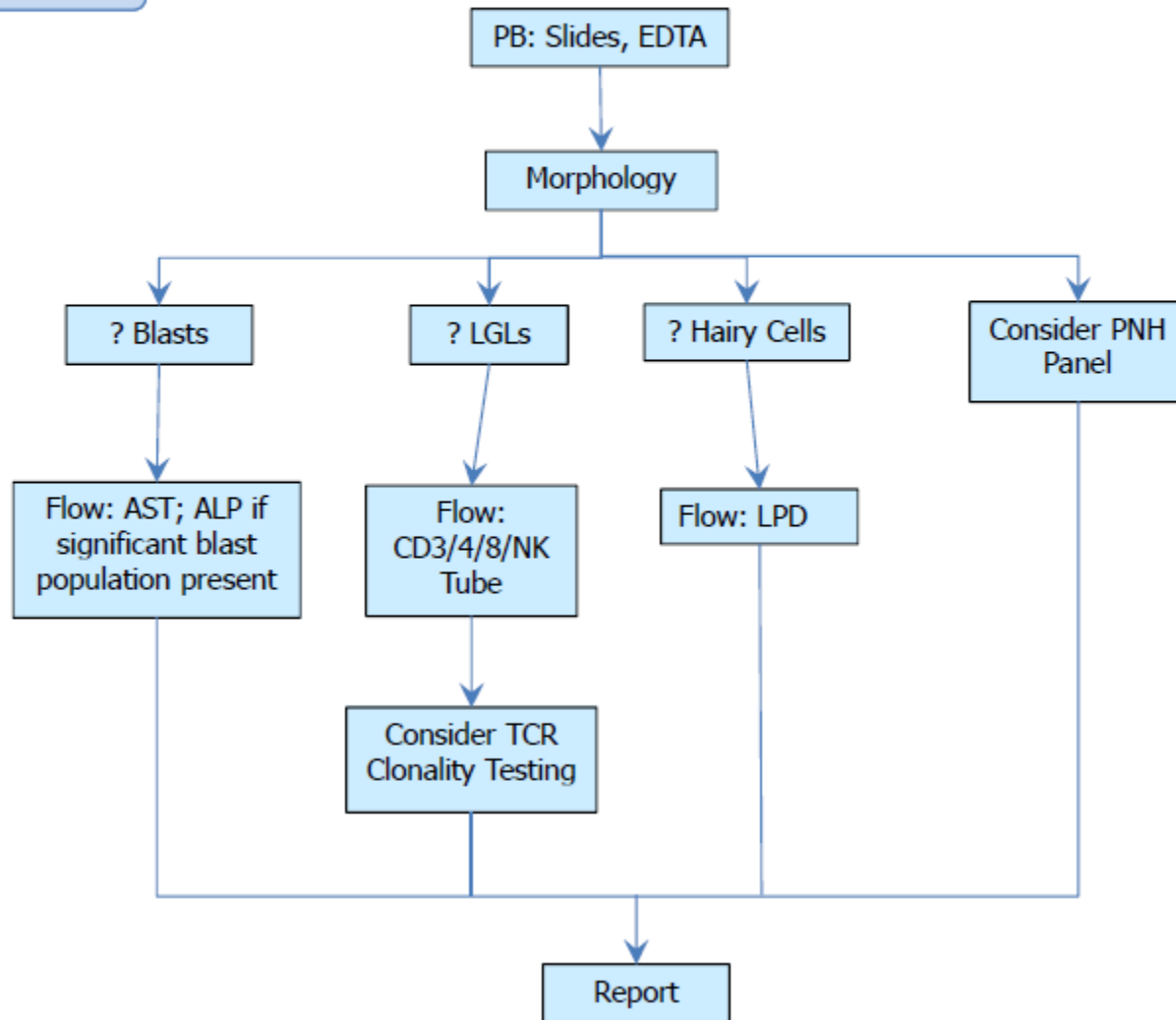


Solid lymphoreticular specimens

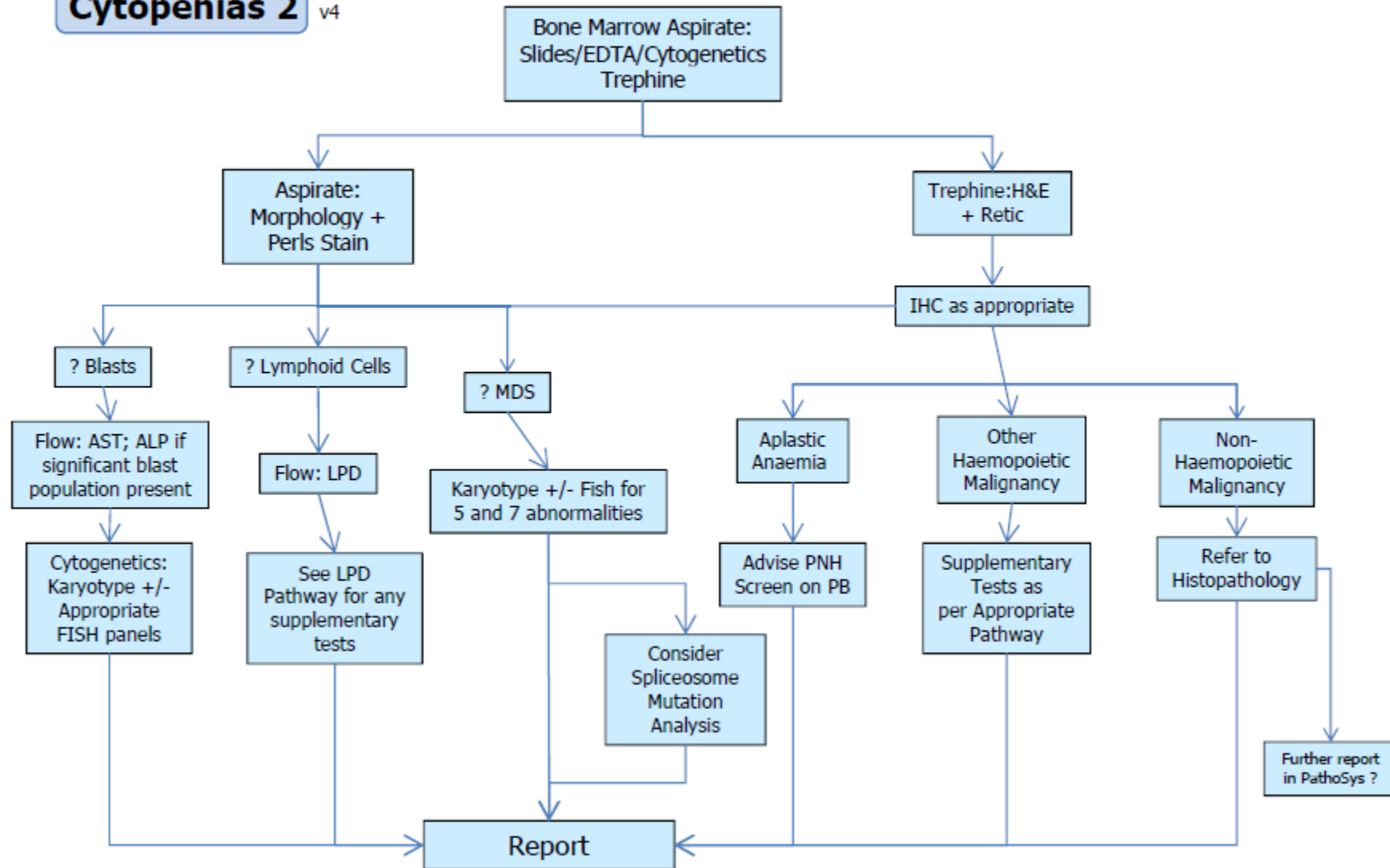




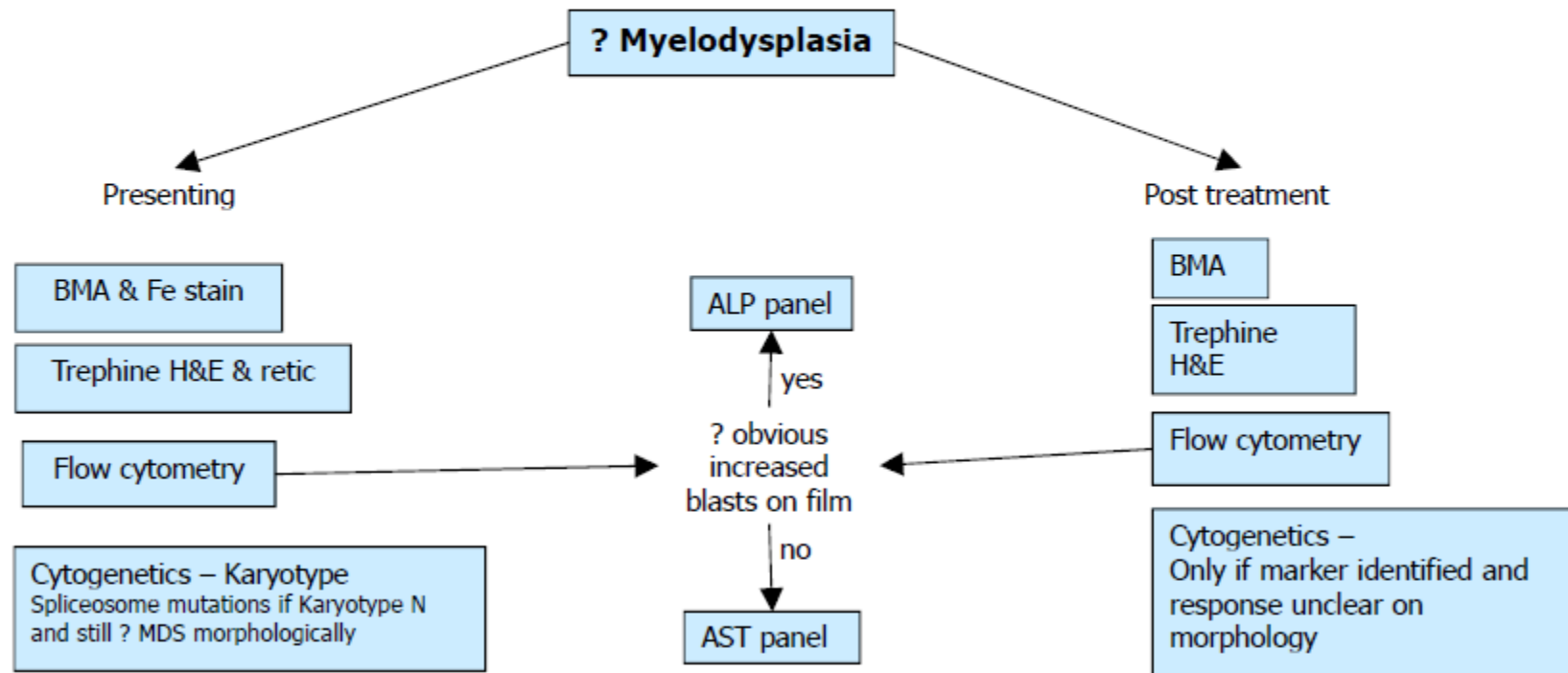
Cytopenias 1 ^{v4}



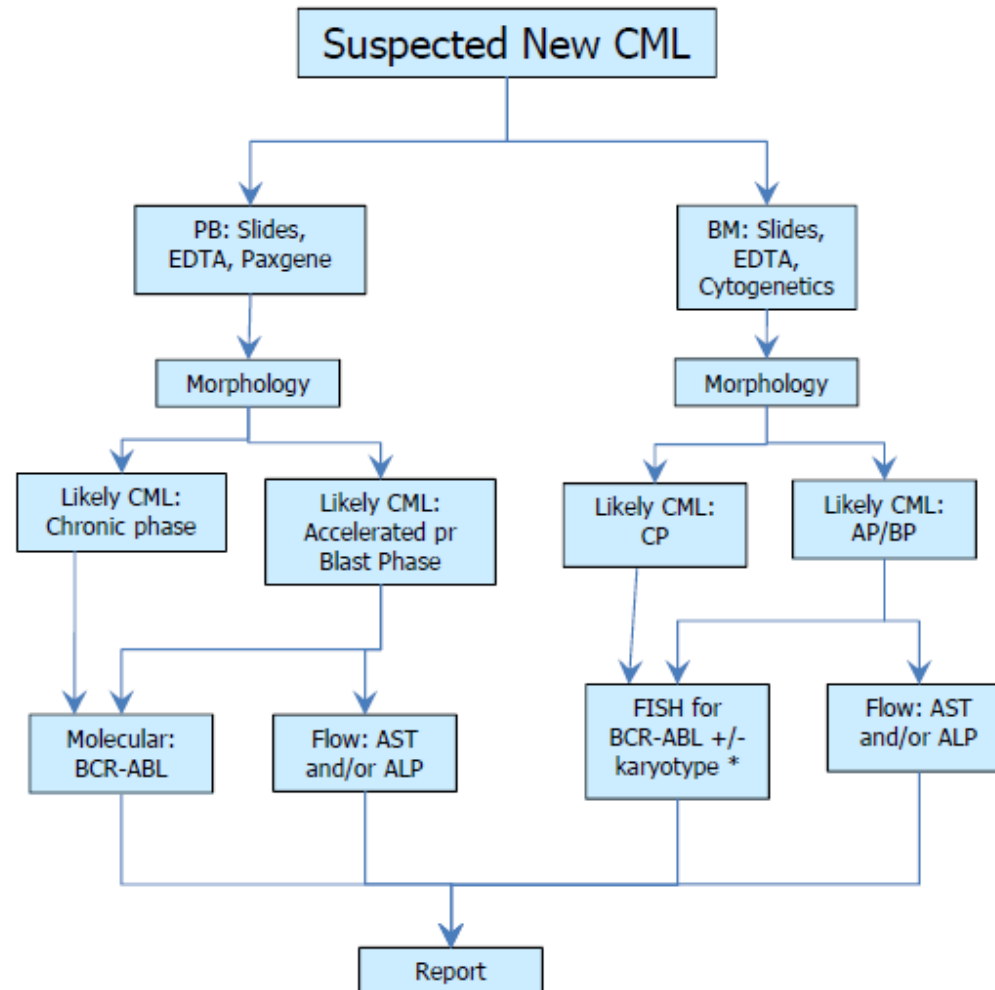
Cytopenias 2 v4



Myelodysplasia v3

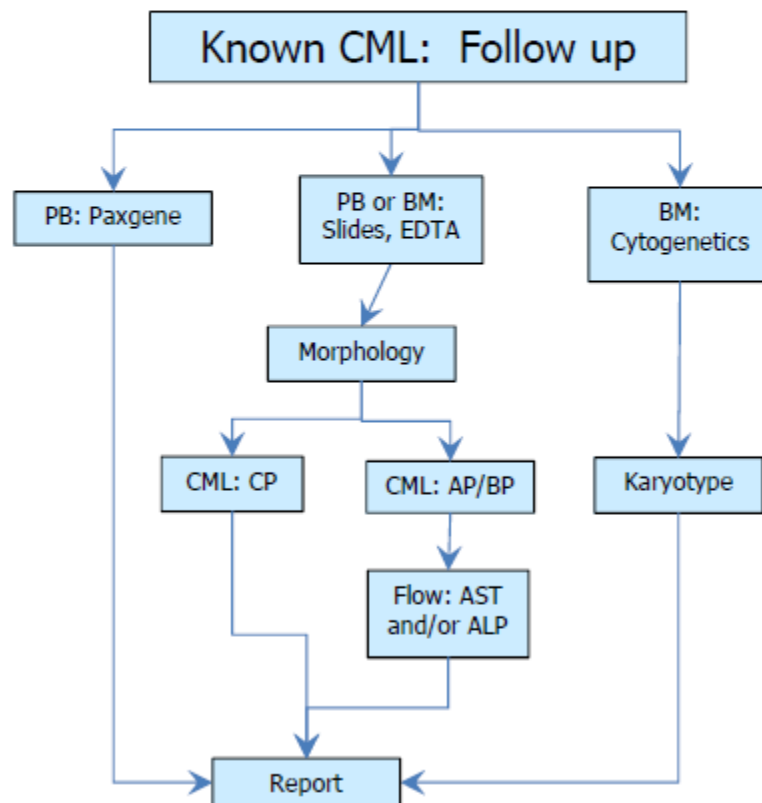


CML 1 v4

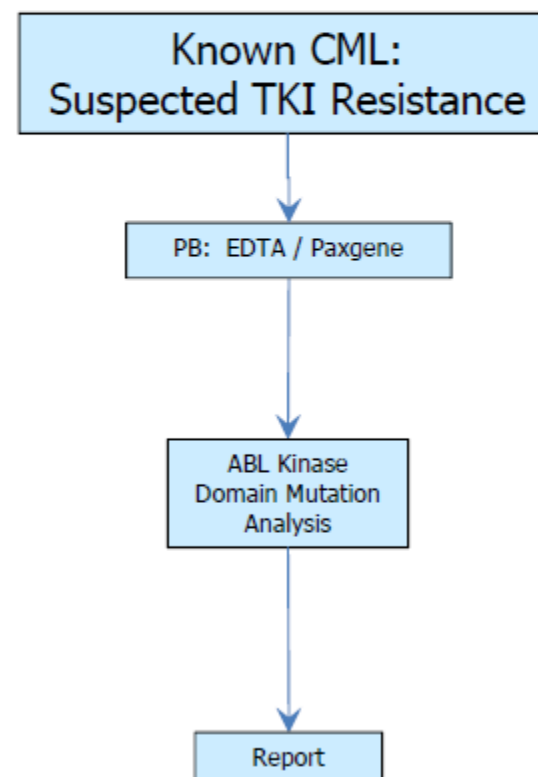


* FISH for BCR-ABL NOT required if already demonstrated by molecular testing

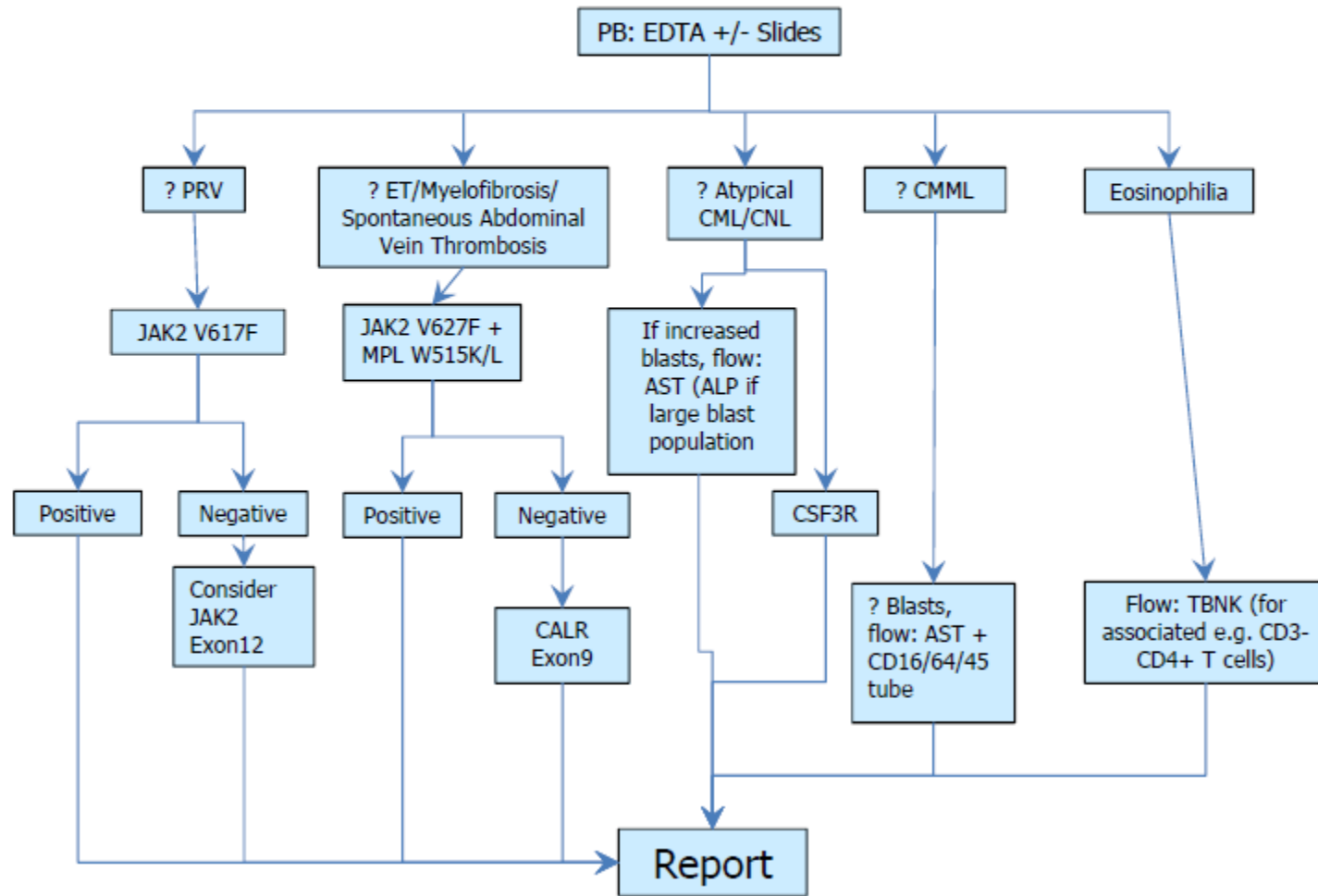
CML 2 v4



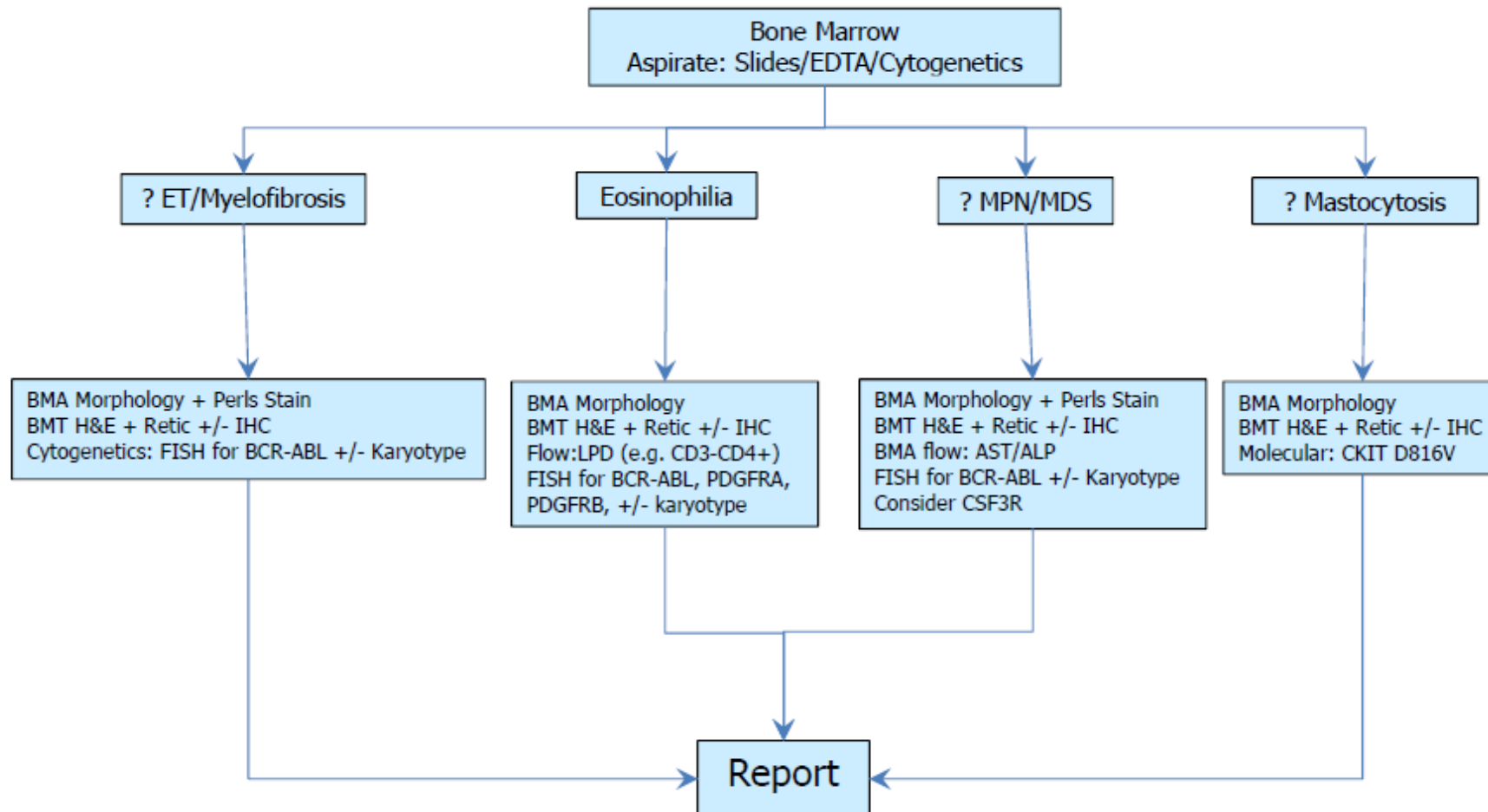
CML 3 v3



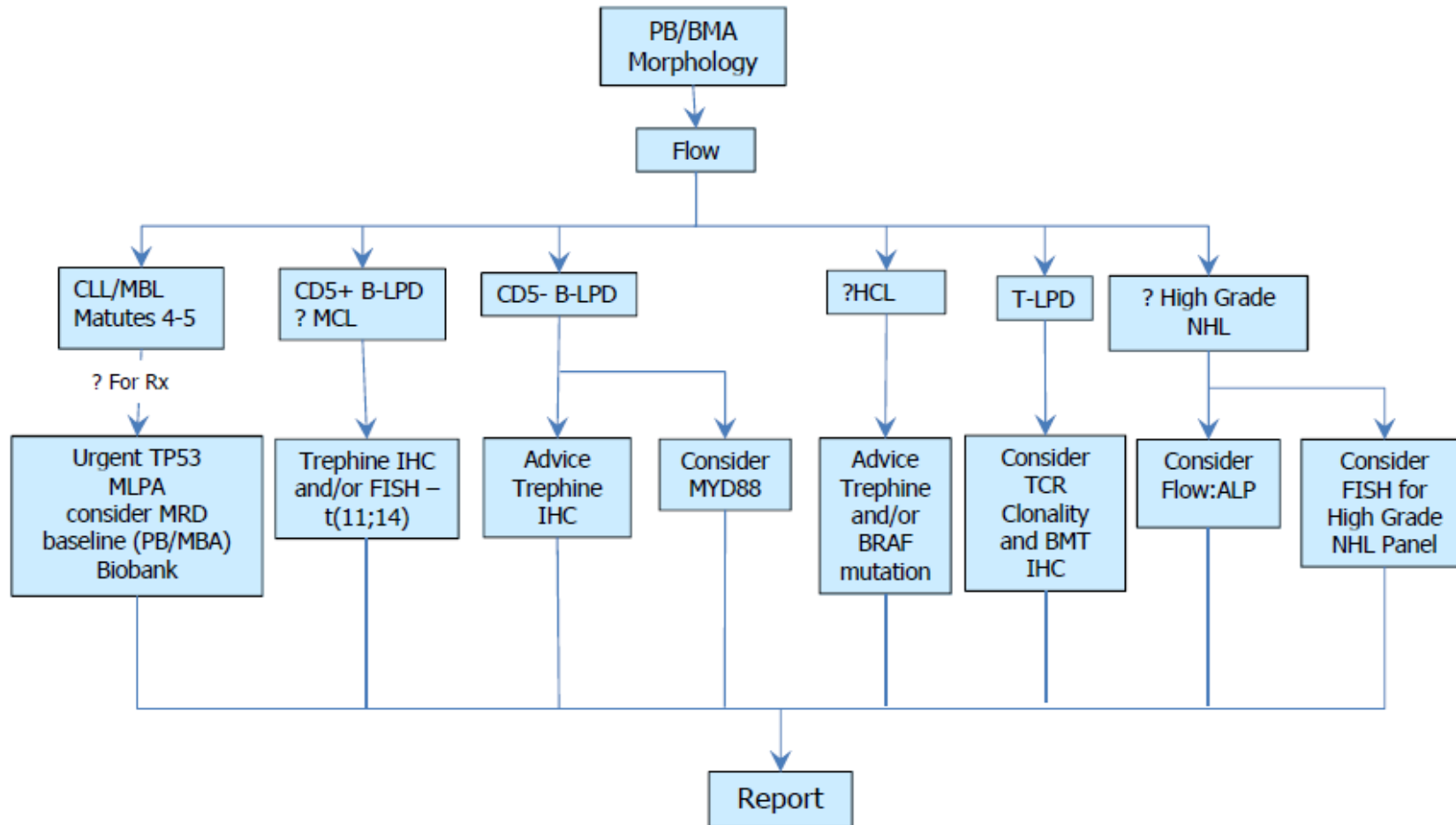
MPN 1 v3



MPN 2 v3



Lymphoproliferative and Lymphoma 1 v6



Lymphoproliferative and Lymphoma 2 v6

